



NSW Institute of Sport
corporate
plan
2009-2013/2013-2017





NSW Institute of Sport
**corporate
 plan**
 2009-2013/2013-2017



contents

Purpose..... 3

The Plan 3

Operations 3

Principles for success..... 4

Athlete environment..... 4

Coaching..... 4

Service, support and innovation 5

Emerging talent 6

Value and image 6

Leadership 6

Operational dynamic 7

purpose

The NSW Institute of Sport (NSWIS) is a leading high performance sport Institute that provides world class coaching, services, and flexible innovative training environments. In conjunction with a holistic approach to athlete welfare, career and educational assistance the NSWIS supports and develops targeted elite and emerging athletes to achieve their highest potential.

THE PLAN

The NSWIS Corporate Plan 2009 – 2013 – 2017 is an ambitious future framework that will provide the NSWIS with a structure that addresses the difficulties of a changing sporting environment. Capitalising on the stability created over the previous quadrennium, in particular the development of a new NSWIS home, a flexible eight year plan with rolling annual Business Plans will allow the NSWIS to meet the challenges of the future.

OPERATIONS

The NSWIS operates with a decentralised philosophy, which allows flexible training options for elite athletes, allowing them to remain in their home environment and minimise disruption to family, career and educational pursuits.

During the next two Olympic cycles the NSWIS will seek to take advantage of the operational changes implemented

during 2008 to reach our performance goals. Particularly focusing on our critical success factors:

- Quality Coaching
- Applied Technology
- Emerging Talent

Our athlete focused approach, combined with our values and culture, will encourage development of the 'complete' athlete in a supportive high performance environment that promotes:

- Sporting Progression
- Balance and Attitude
- Health Management
- Ethical Behaviour



NSW Institute of Sport corporate plan 2009-2013/2013-2017



principles for success

■ Athlete Environment

We will meet the needs of individual athletes in sport and life by providing an environment that is flexible and of the highest quality.

Outcome

Athletes are successful
Athletes have acquired life skills

Measure

Results (progression, consistency, retention)
Percentage of athletes studying, employed, developing

■ Coaching

We will provide athletes with access to world class coaching expertise.

Outcome

The NSWIS has quality coaches
Athletes have access to specialist coaching opportunities

Measure

Number of coaches recognised within the National system
Number and quality of specialist coaching initiatives.
Stakeholder feedback

■ Service, Support and Innovation

Through a proactive, targeted approach athletes will benefit from the provision of high quality services, resources, innovative practices and applied research.

Outcome

The NSWIS delivers effective quality High Performance Services that contribute to successful athlete performances

NSWIS Corporate Services effectively secures and manages resources that support the Institute and its athletes

The NSWIS undertakes specific initiatives and innovative projects that support athlete performances

Measure

Relevant stakeholder feedback/indicators

Relevant stakeholder feedback on allocated resources

Impact of initiatives and innovative projects on athlete performance

■ Competition

We will provide targeted athletes with access to world class competition opportunities.

Outcome

The NSWIS provides selective access to world class competition opportunities

Measure

Performance of targeted athletes



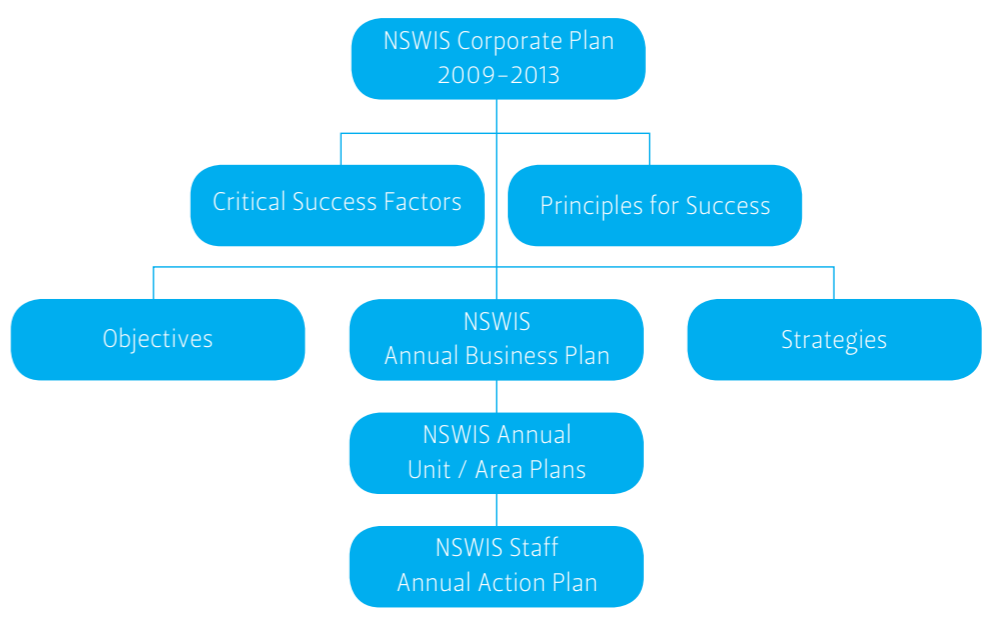
NSW Institute of Sport
corporate plan
 2009-2013/2013-2017



operational dynamic

The following diagram shows the relationship between this Corporate Plan and the supporting Business Plan which in effect, is the Institute's working document. Each section of the Institute has contributed to the development of this document and each staff member will adopt the working strategies as an integral component of their personal action plan.

An important element of this plan is the working link between the key objectives and performance indicators that provides an invaluable guide to how we measure success as well as meeting our objectives.



■ **Emerging Talent**

We will work with targeted partners to identify and develop emerging talent.

Outcome
 Quality of athletes entering the NSWIS increases

Measure
 Number and progression of EAP athletes onto National Elite Sports Pathway

■ **Value and Image**

We will promote our values and image through an environment that recognises the importance of excellence, success, ethics, accountability, social responsibility, team work, fairness and equity.

Outcome
 The NSWIS is a desirable place to work
 The NSWIS is valued by athletes
 The NSWIS athletes are held in high regard
 The NSWIS is well recognised in both public and sporting fraternities
 The NSWIS meets all legal, corporate, statutory and quality assurance obligations
 The NSWIS has effective Governance and Management processes

Measure
 Staff retention, staff satisfaction, stakeholder feedback
 Athlete retention, athlete feedback
 Public perception, number of requests for athlete appearances, associated feedback, media promotion
 Increased media coverage, consistency of corporate image, increased sponsorship opportunities
 Obligations met, full compliance
 Government assessment, Board feedback/assessment, staff assessment

■ **Leadership**

Through engagement with key stakeholders we will provide leadership in the sporting environment to coordinate, develop and deliver high performance sporting outcomes.

Outcome
 The NSWIS recognised as a leader in the Australian sporting network

Measure
 Profile of the organisation (media monitors), stakeholder feedback